

How to...

Move/connect to an existing Nintex Workflow database.

Background:

In some cases it may be necessary to move an existing Workflow database from an old server to a new upgraded version or simply connect an already existing database to a new install of Nintex Workflow.

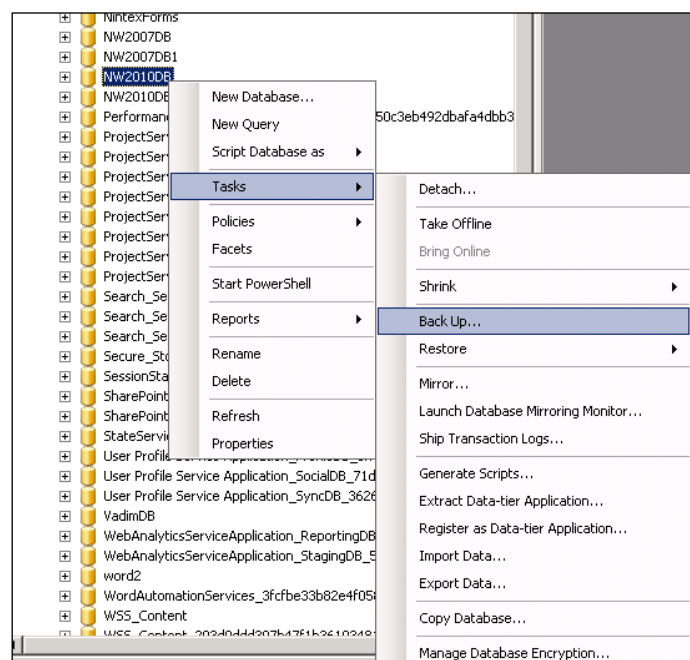
Preparation:

Follow the install guide (located at http://nintexdownload.com/Nsupport/NW2010_Installation_Guide_English.pdf) until 'Chapter 2 - Database configuration'. Follow these instructions instead when moving/connecting to an existing database. Once your database has been configured, you can follow the installation guide as normal.

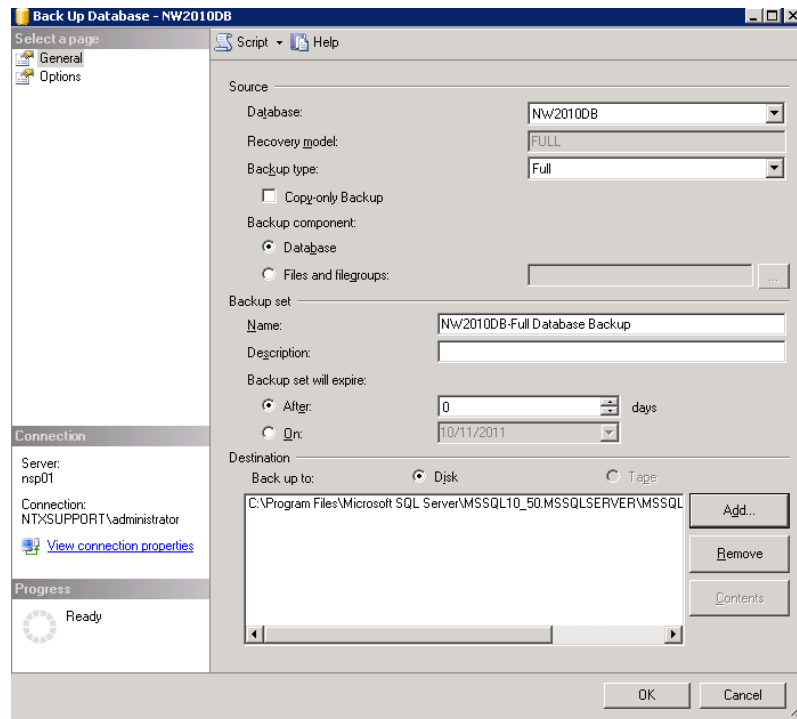
Moving the Nintex Workflow Database:

On the server where the Nintex Workflow database is currently located:

- Open SQL server management console
- Find the Nintex Workflow 2010 database you want to move (named NW2010DB by default)
- Right click on it and choose Tasks->Back Up.... as shown below:



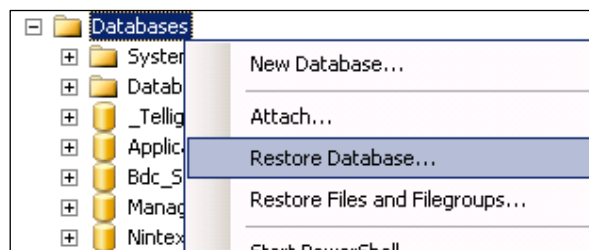
- Then click Ok making sure it matches these settings before doing so (default):



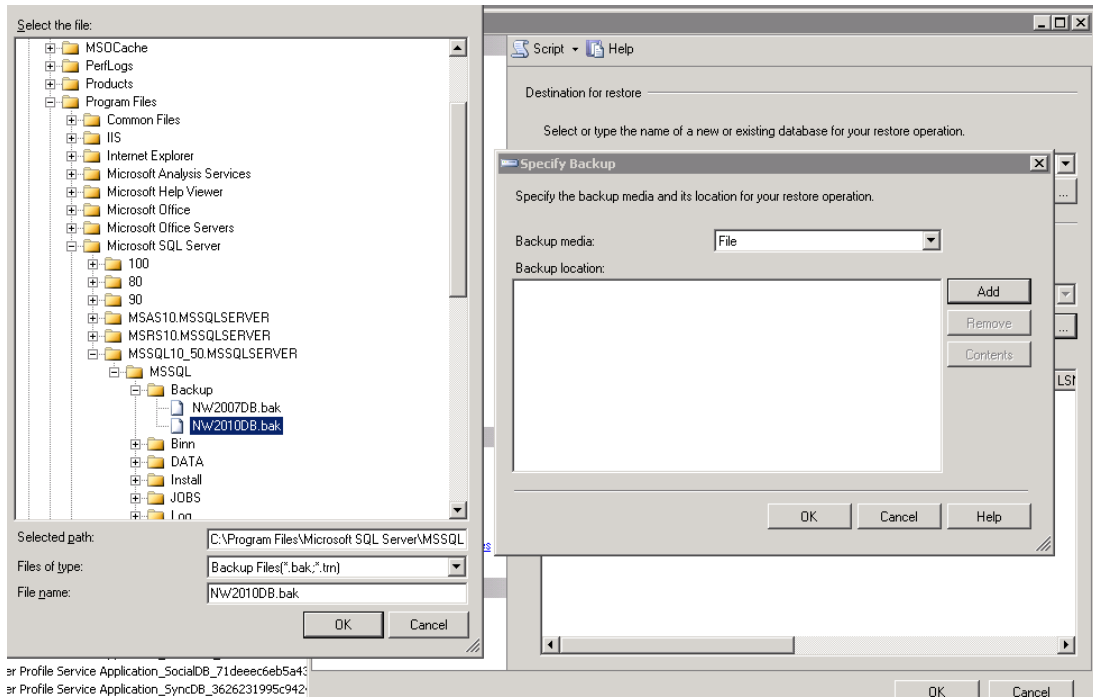
- This saves a backup of the NW2010DB to the default directory of "C:\Program Files\Microsoft SQL Server\MSSQL.1\MSSQL\Backup\" under the filename "NW2010DB.bak".

On the server you are moving the Nintex Workflow database to:

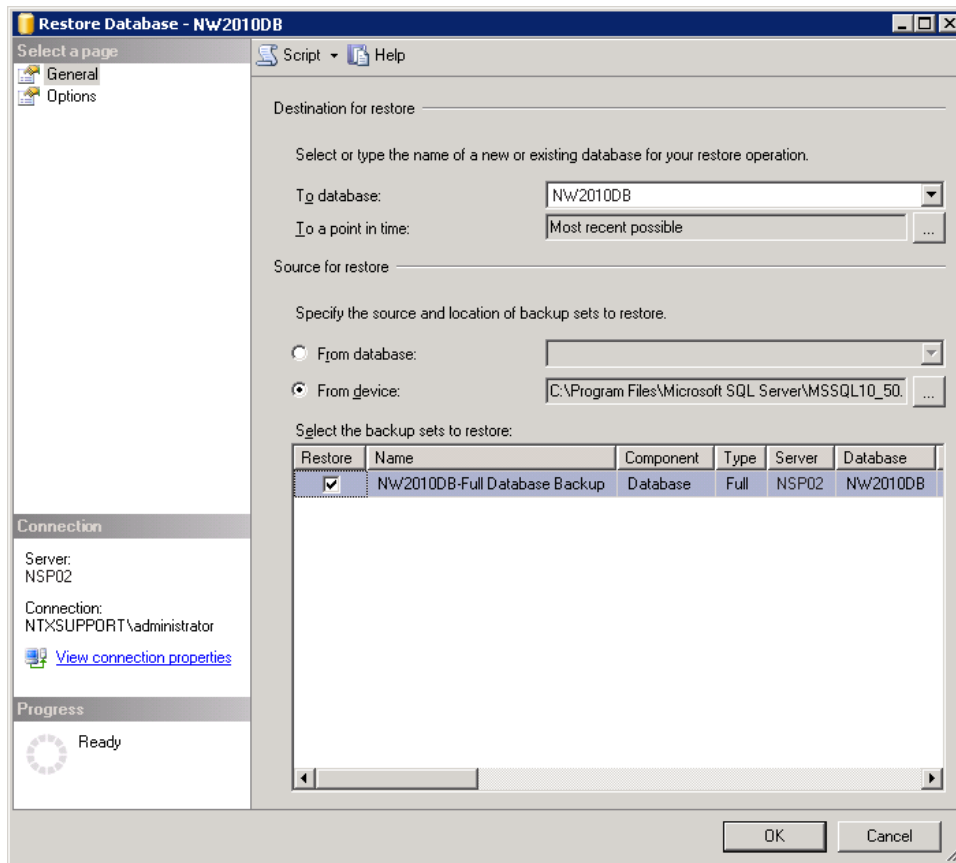
- Copy the previously backed up "NW2010DB.bak" file to the default directory "C:\Program Files\Microsoft SQL Server\MSSQL.1\MSSQL\Backup\"
- From the SQL management console right click on Databases and select 'Restore Database...'



- Then select 'From device' and then 'Specify file (...)'
- Click on add and browse for your backed up database file in this case "NW2010DB.bak"



- Press ok twice, make sure to tick the restore check box next to the database you are restoring and then NW2010DB as your 'To database:' as shown below:



- The database has now been moved and is ready to be connected to by Nintex Workflow.

Reconnecting to the existing database:

Stage 1 - Connect the new configuration database.

1. In Central Administration, open the Application Management tab.
2. Choose Database Setup under the Nintex Workflow Management section. You should see the following screen:

Microsoft SharePoint 2010 Central Administration > Nintex Workflow Management > Nintex Workflow Database Setup
Use this page to manage the Nintex Workflow database settings.

Database Version: 2.0.1.2

Configuration Database

NSP01 Edit

Data Source=NSP01;Initial Catalog=NW2010DB;Integrated Security=True

Content Databases

Content Database	Connection String
NSP01 / NW2010DB	Data Source=NSP01;Initial Catalog=NW2010DB;Integrated Security=True

[Add content database](#)
[View database mappings](#)
[Manage database mappings](#)

3. Choose to Edit the Configuration database.
4. Enter the new details and choose 'connect to existing' (in this case moving from NSP01 -> NSP02).

Central Administration > Nintex Workflow Management > Nintex Workflow Database Setup > Change configuration database
Use this page to change the Nintex Workflow configuration database.

Warning: this page is not encrypted for secure communication. User names, passwords, and any other information will be sent in clear text. For more information, contact your administrator.

Note: You must reset IIS for these changes to take effect.

Database Name and Authentication

Note: Nintex Workflow 2010 cannot connect to a Windows Internal Database that is used by stand-alone SharePoint installations.

Use of Windows authentication is strongly recommended. To use SQL authentication, specify the credentials which will be used to connect to the database.

Database Server: NSP02

Database Name: NW2010DB

Connect to an existing database

Database authentication:

Windows Authentication (recommended)

5. Press Ok.

Stage 2 - Update the references to the content databases:

1. From the database management screen, you will see that the content databases still point to the old server.
2. On the server where you installed the Nintex Workflow 2010 msi, open a command prompt window.
3. Change Directory to the directory in which you installed Nintex Workflow. By default:
C:\Program Files\Nintex\Nintex Workflow 2010
4. Type the command

```
Nwadmin -o updatecontentdatabase -servername  
"YourOldServerName" -newservername "YourNewServerName"
```


and place your server names in the quoted areas of the command.
5. Restart IIS and the Windows SharePoint timer service from services.msc.
6. If you check the database management page again, the content database references should be up to date.

If for some reason you need to manage the content database servers manually, you can also do so by modifying the database directly. This has the same effect as running the NWAdmin command.

1. Open the configuration database in your database management tool.
2. Open the table called "databases".
3. You will see the content database details listed. You can update the Server name column as required and submit the change.

Restart IIS and the Windows SharePoint timer service from services.msc and the process should be complete.