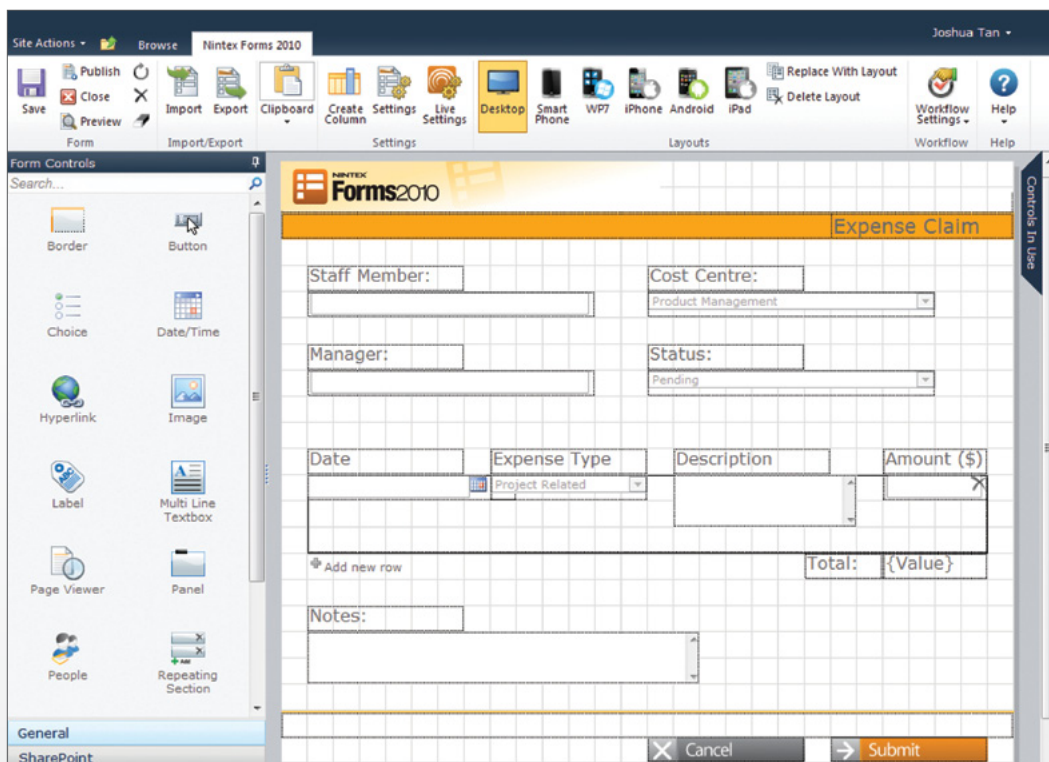




SharePoint Forms for Everyone on Any Device

Nintex Forms 2010 is a web based designer that enables forms to be created within SharePoint quickly and easily. Forms can then be consumed on most common mobile devices from the internet, anywhere and anytime. Nintex Forms integrates seamlessly with Nintex Workflow to automate business processes and deliver rich SharePoint applications.



QUICK AND EASY FORMS DESIGN

Accessible for business users and powerful for developers

- ✓ Browser based designer embedded within SharePoint
- ✓ Intuitive, easy to use, drag and drop interface
- ✓ Design once and target many devices

CONSUME ANYWHERE ON ANY DEVICE

Delivers mobile access to SharePoint forms

- ✓ Optimized for most common mobile devices
- ✓ Support for authenticated and anonymous forms
- ✓ Publish forms to the internet with one click

SEAMLESS WORKFLOW INTEGRATION

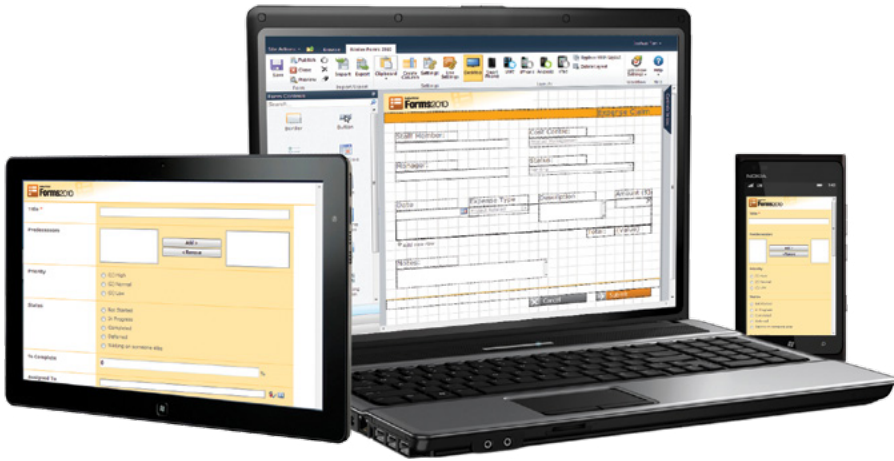
Fully integrates with Nintex Workflow and SharePoint

- ✓ Transform forms into rich business applications
- ✓ Combine a form and workflow into a distributable package
- ✓ Connect forms to cloud services including Office 365*

INTUITIVE BROWSER BASED FORM DESIGNER

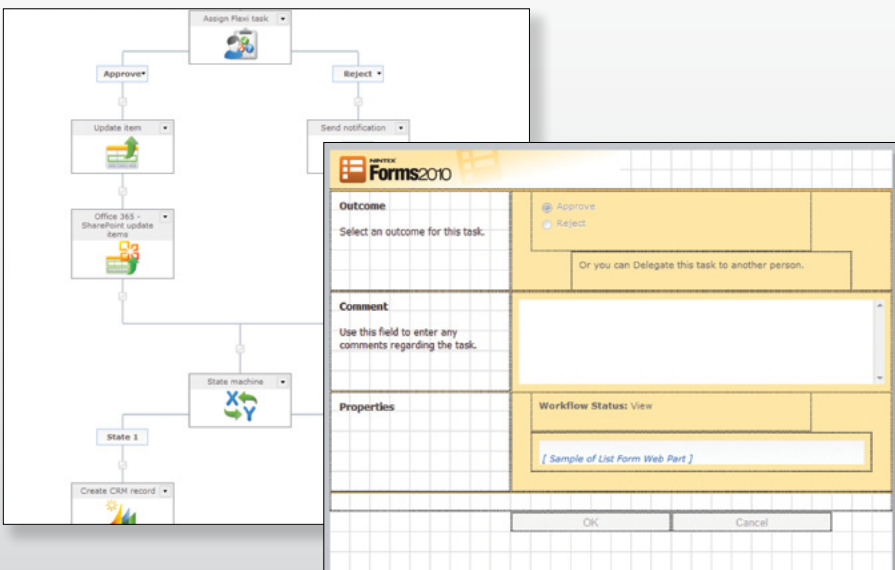
Nintex Forms 2010 is browser based and fully integrated into the SharePoint Fluent ribbon interface, requiring no client software licensing or installation. Design visually appealing forms with background images, custom buttons, and rich HTML formatting.

Use predefined device layouts or create custom layouts for any screen size, and preview the form in different device layouts before publishing.



FORMS PUBLISHED TO THE INTERNET

Publish forms to the cloud with a single click, without the need for extra hardware, software or infrastructure configuration. Forms can then be accessed by anyone outside the corporate network connected to the internet.



WORKFLOW FORMS MADE EASY

Combine Nintex Forms with Nintex Workflow 2010 to transform workflows into rich business applications. Nintex Forms automatically generates the required elements for Nintex Workflow forms, and allows workflow variables to be used as form data.

For more information on Nintex Workflow go to www.nintex.com/workflow



Gold Independent Software Vendor (ISV)



Find out more: www.nintex.com | Inquiries: sales@nintex.com