

## System Requirements

### Prerequisites

The Nintex SmartLibrary Migration Tool requires SmartLibrary v1.1 to be installed on Microsoft Windows Server 2003.

### Browser Client

Microsoft Internet Explorer 5.01 although Microsoft Internet Explorer 6 or greater is recommended.

### Software

Nintex SmartLibrary Migration Tool requires that the following software is installed and correctly configured:

- Nintex SmartLibrary V1.1 on Windows Server 2003
- Microsoft Windows SharePoint Services on the same server.

### Hard Disk

The Nintex SmartLibrary Migration Tool requires less than 3 MB of free hard disk space.

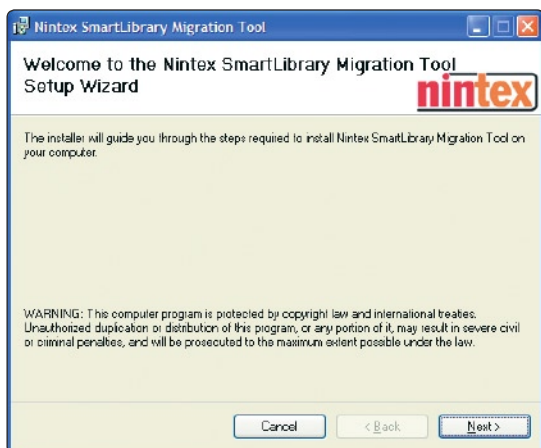
**NB.** For more information on required disk space, see the next page.

## Installation procedure

SmartLibrary Migration Tool is installed by running the installer package on the server hosting Nintex SmartLibrary. The Migration Tool will not work unless SmartLibrary V1.1 is already installed. In the case of multiple servers or a web farm configuration, the Migration Tool will need to be installed on each Web Farm Server on which SmartLibrary is currently installed.

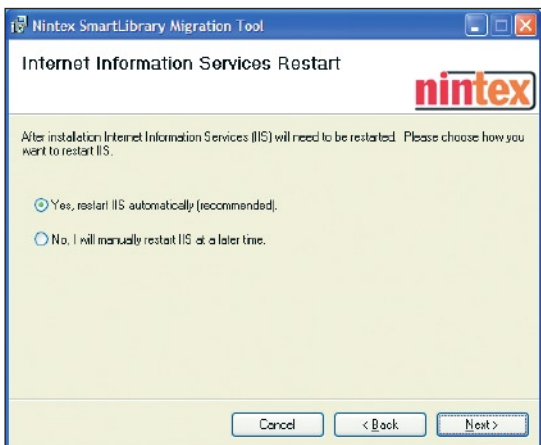
### Run the Nintex SmartLibrary Migration Tool installer

1. Login to the SharePoint Server using an account with administrative privileges. Launch the Migration Tool Installer and select 'Next'.

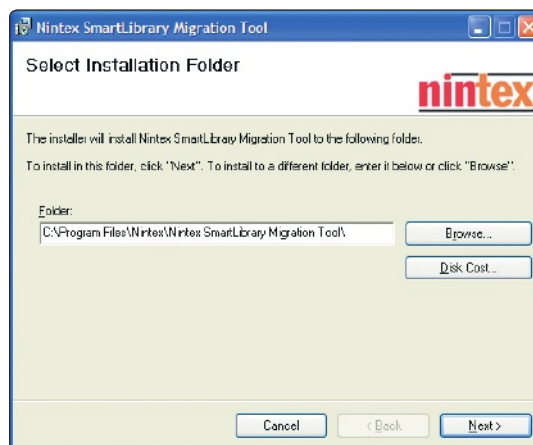


2. Read the License Agreement. Select either 'I Agree' or 'I Do Not Agree': if you do not agree, the installation process will be cancelled.

3. You will be prompted with the question of whether or not you would like to restart IIS automatically. Restarting IIS automatically is recommended.

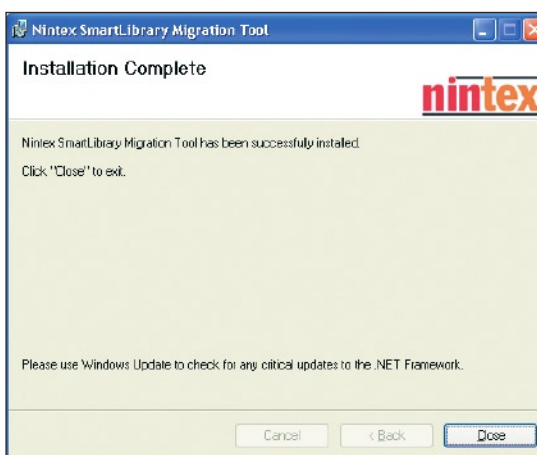


4. Now choose the destination folder. The default location that appears is recommended.



5. The 'Confirm Installation Screen' will now be displayed: click 'Next' and the installer will begin copying files.

6. The 'Installation Complete' screen will be displayed: click 'Close'.



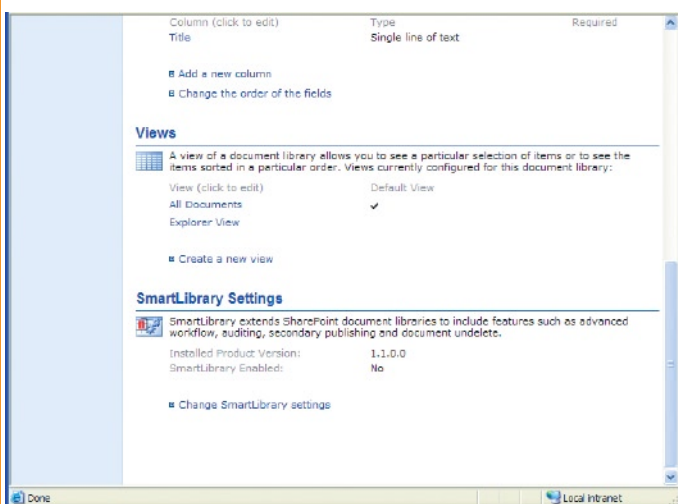
7. The SmartLibrary Migration Tool is now ready to use.

## Adding SmartLibrary functionality to an existing document library

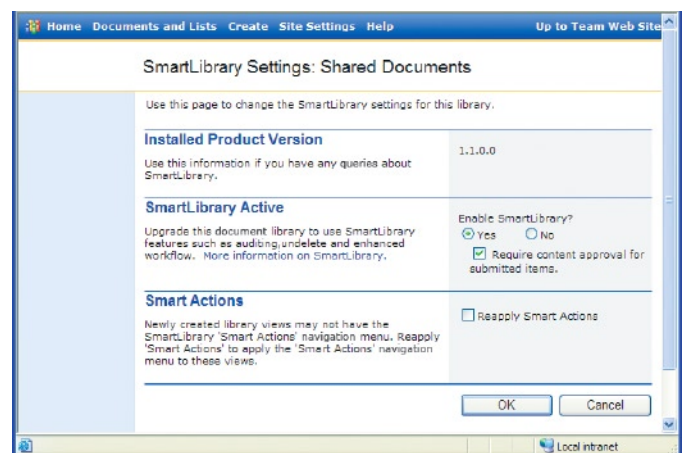
1. To add SmartLibrary functionality to an existing Windows SharePoint Services ("Team site") library, simply navigate to the Document or Form library that you wish to upgrade.
2. Click the heading to view the Document Library, then click the 'Modify Settings and Columns' link under 'Actions' in the left hand menu.



3. At the bottom of the 'Customize' page that is displayed, click 'Change SmartLibrary settings' under the 'SmartLibrary Settings' heading.



4. The 'SmartLibrary Settings' page is displayed. On it set 'Enable SmartLibrary' to 'Yes' and click 'OK'.



That's it! All SmartLibrary functionality is now enabled! To verify this, return to your document library and look at the 'Actions' menu in the navigation area at the left of the page: you should now see the options 'Audit Log', 'Deleted Items' and 'Workflow'.

## Additional notes - Hard Disk space

Those responsible for installing the SmartLibrary Migration Tool should be aware of the requirements for extra disk space related to SmartLibrary's Undelete functionality. The Undelete function works by making a shadow copy of every file in the selected Document Library. This means that the required hard disk space will increase by twice the current size of every document library that is upgraded - a document library containing 9MB worth of documents would therefore be increased to 18MB.

Site administrators should ensure that there is sufficient disk space to handle the increased load requirements.

Furthermore, if an administrator has set a quota limit on a document library, the quota will need to be amended to take into account the increased storage size needed by the document undelete functionality.